

# What is a bequest or legacy?

A bequest refers to property and possessions left in your will to a named person or organisation.

There are different types of bequests —

- you can leave something specific (such as a house)
- you can leave a percentage of your estate, or the residual of your estate, after giving specific gifts to individuals or organisations

A legacy is a gift of money left in your will to a named person or organisation.

## Giving a gift that keeps on giving

Australian Lutheran College (ALC) welcomes bequests and legacies of any type.

ALC is a college grown with seeds of faith, planted first by our forefathers, and focused on a future worth having—our future in Christ.

Leaving a bequest or legacy to ALC will make the future possible for students preparing to be pastors, mission workers, teachers and leaders for our Church.

*I thank my God every time I remember you. In all my prayers for all of you, I always pray with joy because of your partnership in the gospel.*

Philippians 1:3–5



AUSTRALIAN LUTHERAN COLLEGE

L E A R N I N G F O R L I F E

### Contact us

Australian Lutheran College  
104 Jeffcott Street  
North Adelaide SA 5006  
Australia

Freecall: 1800 625 193  
T: +61 8 7120 8200  
E: [alc@alc.edu.au](mailto:alc@alc.edu.au)  
W: [alc.edu.au](http://alc.edu.au)  
eNews: [www.lca.org.au/enews](http://www.lca.org.au/enews)



[AustralianLutheranCollege](https://www.facebook.com/AustralianLutheranCollege)

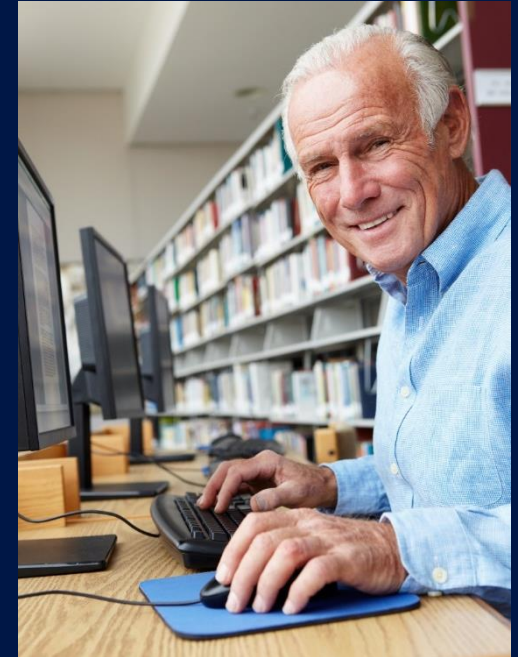


[AusLutheranCollege](https://www.youtube.com/AusLutheranCollege)

Australian Lutheran College

D756/C842 Approved: 22/08/2024

# Bequests to ALC



L E A R N I N G F O R L I F E

# How do I include a bequest to ALC in my will?

To leave a bequest or legacy to ALC, the following wording can be used in your will:

'I hereby bequeath to the Australian Lutheran College (ALC), the sum of \$ \_\_\_\_\_ (or \_\_\_\_\_% of my estate), free of all duties, to be used by ALC for educational purposes and I declare that the receipt of the Business Manager or other proper officer of Australian Lutheran College, shall be full and sufficient discharge to my trustees who shall not be obliged to see the application thereof.'

*We have supported ALC's mission to prepare the church's future pastors, mission workers and teachers for years.*

*And, it gives us joy to know that when the Lord calls us home a portion of what He has entrusted to us during our lives will go to further the mission of Australian Lutheran College.*

—ALC donor

## Continuing partnerships

You're our partner, too.

### Learning and teaching

ALC prepares all sorts of people for all sorts of ministry.

We want to provide the best possible learning and teaching environment for our students, staff and community.

ALC serves the Church by preparing teachers, lay workers, volunteers and pastors for their own service. We have a diverse range of courses and learning opportunities that support mission and ministry at the local, national and international level. We want to bring these courses and learning opportunities to more people.

ALC has a wonderful library with a collection that is moving more and more

towards electronic resources. This collection is already available to everyone—we want to make it accessible to all.

### ALC Research

ALC encourages deeper learning by individuals and the church through research. We provide research degrees through the University of Divinity, and resource projects that address the needs of the present and future church in Australasia and the Asia-Pacific region.

ALC Research aims to:

- initiate and support research projects based in Lutheran theology and ethics
- promote research activity at ALC
- engage in national and international networks of scholarship

- build a national and international profile and reputation for research excellence in theology and ethics
- disseminate research findings widely to the Lutheran community and general public
- hold occasional academic conferences on theological and ethical topics.

ALC Research needs your support too.

### ALC Training

ALC Training provides churches, schools and ministry groups with training customised to their ministry context and presented with a Christ-centred focus. ALC Training is also providing a platform for many church agencies to host their online learning modules.

### How can I leave something to ALC and look after my family at the same time?

We suggest you talk over your wishes with your family and obtain professional guidance to assist and advise you before making your will.

We strongly encourage our partners to ensure that they provide for their family first in their will.

Many people choose to leave a proportion of their estate to ALC.

The seeds of your generosity will continue to support and equip people to serve in God's world.

Through your bequest or legacy your partnership with ALC will continue long into the future.

If you have any questions about leaving a bequest or legacy to ALC, please contact the Business Manager on freecall 1800 625 193 or email: [alc@alc.edu.au](mailto:alc@alc.edu.au).

